

A STATE OF THE ART BIOMAT

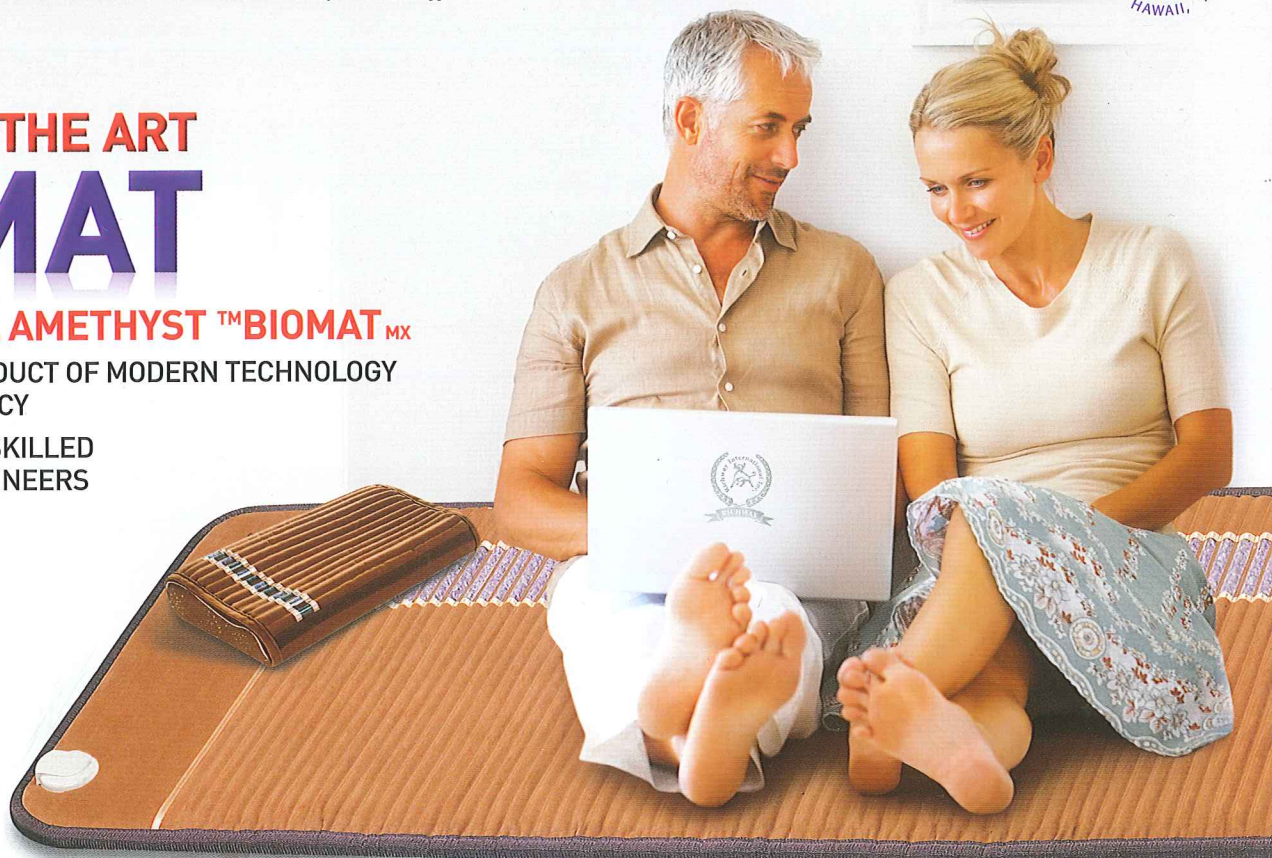
PROFESSIONAL AMETHYST™ BIOMAT_{MX}

THE BIOMAT IS A PRODUCT OF MODERN TECHNOLOGY WITH PROVEN EFFICACY

CRAFTED BY HIGHLY SKILLED SCIENTISTS AND ENGINEERS



A BREAKTHROUGH IN MEDICAL SCIENCE

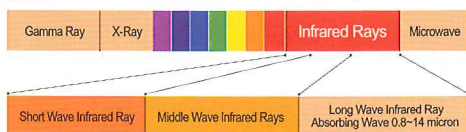


RICHWAY™ BIOMAT_{MX}

Unlike an electric blanket, the Biomat does not get hot when it is turned on. The heat comes from friction generated within the body from the effects of the far infrared rays. It warms the inside of your body and the part of the Biomat making contact with your skin gets warm.

Should the temperature of any part of the Biomat exceed the set temperature, the sheet current is cut off by thermal sensors distributed throughout the Biomat. When the Biomat reaches the selected temperature, then the Negative Ions come on and will stay on until the Biomat needs to raise the temperature. It comes with an external control box which allows you to adjust the desired temperature and running time (between 2, 4, 8, or 12 hours). As an added safety feature, when the controller is set to 122° F or higher, it will automatically step down to 113° F after 4 hours.

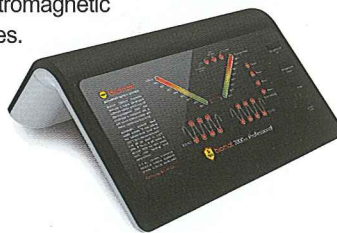
6.5 Micron Infrared Ray



Far Infrared Rays penetrate 6 inches into the body. Therefore, these rays not only benefit the muscles on the surface of the body, but all cells including blood vessels, lymph glands, and nerves in the deepest parts of our body.

™ BIOMAT_{MX} SPECIFICATIONS

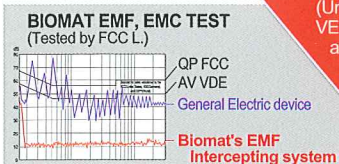
- 1 The Super Fiber Materials generate far infrared rays (6-12 microns) that the human body can easily absorb.
- 2 A Special layer of double fiberglass and Carbon completely cuts off harmful Electromagnetic waves.



What does the Biomat EMF interceptor do?

The Biomat EMF Interceptor acts in the same way as a lightning rod, safely conducting the EMF energy away to ground. With this feature, you can effectively block exposure to EMF for yourself and your family.

Biomat EMF Blocking Levels drop far below standards for safety established by the FCC (United States) VED (German) and CISPR (World)



RICHWAY BIOMAT Licenses and Certificates

FDA U.S. FDA
 U.S. Food and Drug Administration(FDA) approved medical device (510K 072534)

PS E J.ELECTRIC SAFETY
 Permitted by the Japanese Electric Safety Authority (09-09087182)

GMP
 Good Manufacturing Practice(GMP) approved manufacturer (No. 05-794)

ISO 13485
 Approved as an international medical device manufacturer (08 0037 SJ)

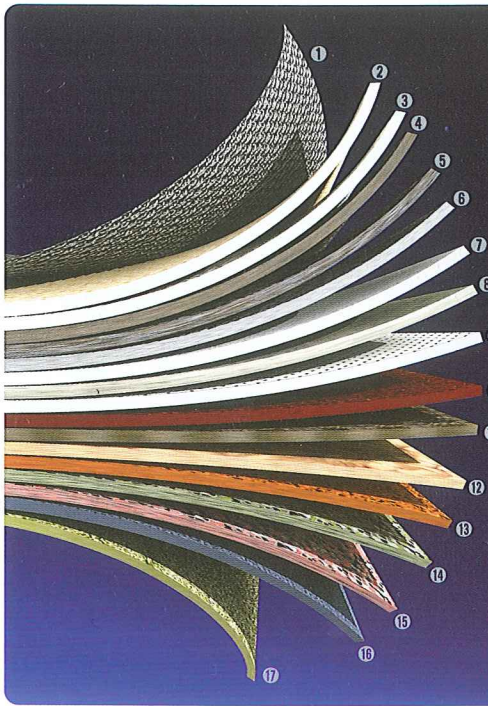
ISO 9001
 Approved as an international electric equipment manufacturer (SKN1454/9474D)

CE
 International Electrical Safety Approval (Eui-si-2009-0555)

KECSO
 Korean Electrical Safety Corporation (KESCO) Electric Appliances Safety Certificate (HA07291-9001A)

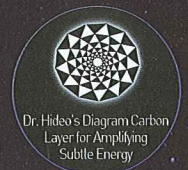
KESTI
 Electromagnetic Shielding Safety Approval (JP2007-0258)

Unique Innovation in Bio Technology : Consists of 17 Layers.



Produces High Quality Infrared Rays By Means of Super Fiber and Natural Amethyst.

- 1 **Surface material** : Silicon Urethane with Cotton
- 2 First waterproof layer
- 3 **Amethyst (with Tourmaline)** : Transfer to natural Far Infrared Ray
- 4 Hyron Cotton layer for thermal insulation
- 5 Second waterproof layer
- 6 **TOCA layer** : Strong Negative Ions and an Magnetic Reaction
- 7 Electric Discharger layer for generating Negative Ions
- 8 Copper fabric layer for Electromagnetic Interception
- 9 Carbon Fiber layer for Electromagnetic Interception
- 10 Polyester fiber glass layer
- 11 Tepron Reverse currency heating layer with EMF Interception
- 12 Nonwoven fabric layer for electric blocking
- 13 Aluminium layer for reflecting Infrared Ray
- 14 Nonwoven fabric layer for heat blocking
- 15 Second Hyron cotton layer for thermal insulation
- 16 Polyester sponge layer for thermal protection
- 17 **Bottom layer** : High quality cotton with brass pattern

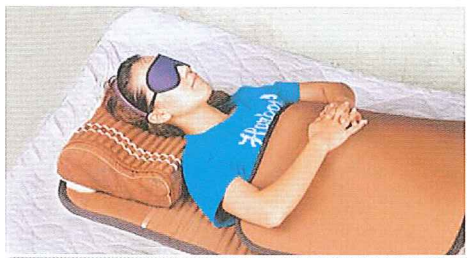


PRODUCE HEAT SHOCK PROTEIN

Heat Shock Protein is known to protect cells from thermal stress. In order for our body to prevent HSP secretions and to allow recovery, our brain actively secretes hormones called Endorphins, which are neurotransmitters responsible for happy emotions and the relief from pain.

43.0	Protein activation	When the body temperature is decreased by 1 degree
41.0	H.S.P	
40.0	Bacteria and viruses are susceptible to heat	
37.0	3,000 Essential enzymes are activating	36% of immune functions decline!
36.5		12% of basic metabolism declines!
35.5	Difficulty in autonomic nervous system	50% of enzymatic activities decline!
35.0	Immunity greatly decreased	

Lay down on the Professional Biomax and cover yourself with the Mini Biomax



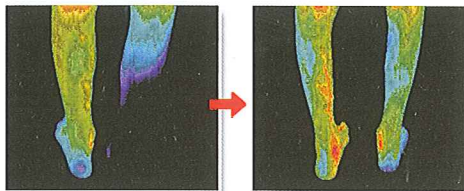
Without Enzyme activity, there is no life.

The aging process tends to damage our blood vessels, which worsens the circulation and makes us feel colder. Decreasing physical exercise naturally lessens the production of heat and the control center of the brain that responds to the changes in temperature.

DEEP IMPACT POWER

Increases Blood Circulation and Strengthens the Cardiovascular System.

As your body increases sweat production to cool itself, your heart works harder pumping blood at a greater rate to boost circulation.



Burns Calories and controls Weight.

As you relax in the gentle heat of the TMBIOMAT_{MX}, your body is actually hard at work, producing sweat, pumping blood and burning calories.

According to a Journal of the American Medical Association report, in a single Infrared Ray sauna session, you may burn as many calories as you would rowing or jogging for 30 minutes. So you lose weight-not just water.

Reduces Stress and Fatigue.

The gentle warmth of your Amethyst TMBIOMAT_{MX} gives you an overall massaging effect, soothing jangled nerves and knotted muscles. You'll feel rejuvenated and renewed, restored in both body and mind.

HOW TO FEEL BETTER AND RECONDITION

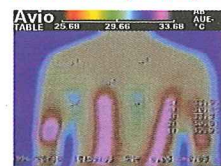
Feel rejuvenated and renewed, restored in both body and mind

Body temperature and metabolic activity. Mitochondria is produced by body heat, and Heat Shock Protein by Infrared Ray's heat and vibration. The Far Infrared Ray is both an electromagnetic wave and an energy wave. Long frequency infrared ray waves are considered to be beneficial to our body. They replicate mitochondrial activities.

Comparison of Normal heat and Biomax Infrared Rays

The following images show examples of two different types of heating. One is the simple application of any warming technique imaginable, while the other is Far Infrared Rays that cause the molecules inside the mitochondria of the cell to resonate and be activated. One of the main focuses of attention during the 21st century will be on these methods of heating the body by the Far Infrared Ray.

Warms your body from the inside out, and stimulates your system.



Heating Pad



Biomax

CONTACT NUMBER